

The following participation requirements apply:

**Active User (VMRS) Vessel Movement Reporting System:**

- Every power-driven vessel of 40 meters (approx 131ft) or more in length, while navigating.
- Every commercial towing vessel of 8 meters (approx 26ft) or more in length, while engaged in towing astern, alongside, or by pushing ahead.
- Every vessel issued a certificate to carry 50 or more passengers for hire, while engaged in trade.

These vessels shall monitor channel 14 VHF/FM, make all required reports, and comply with general VTS rules outlined in the Los Angeles-Long Beach Vessel Traffic Service (VTS LA-LB) User Manual.

**Passive User (VTS):**

- Every power-driven vessel 20 meters (approx. 65ft) or more in length.
- Every vessel of 100 gross tons or more carrying one or more passengers for hire.
- Every dredge or floating plant.

These vessels shall monitor channel 14 VHF/FM, respond when hailed, comply with general VTS rules outlined in the Los Angeles-Long Beach Vessel Traffic Service (VTS LA-LB) User Manual.

**Non-Participant:**

- All other class of vessels.

These vessels are encouraged to monitor channel 14 VHF/FM, contact the VTS to obtain information, seek assistance, report emergencies, observe VTS measures, contact VTS for traffic reports when visibility is less than 1NM.

**NOTES OF INTEREST:**

1. The 25nm outer limit is defined by an arc from PT FERMIN light in position  
LAT: 33-42.3N, LONG: 118-17.6W.
2. There is no speed restriction between the 25nm limit and the Precautionary Area (Regulated Navigation Area). Although there is a voluntary speed reduction zone to reduce emissions from 40NM off Point Fermin.

**INBOUND VESSELS:**

1. Call the Vessel Traffic Center (VTC) on VHF/FM channel 14, call sign "San Pedro Traffic" and provide the following information:
  - Vessel Name/Call Sign
  - Vessel destination
  - Inbound from (N/S/W)
  - Provide ETA (destination, pilot boarding area, anchorage, etc.)
  - Steering and Engine Tests completed and satisfactory
2. Contact Pilots, VHF/FM Channel 73 (Los Angeles Pilots) or channel 12 (Long Beach Pilots) as appropriate.

**UPON ENTERING THE PRECAUTIONARY AREA:**

1. Call "San Pedro Traffic" and provide the following information:
  - Confirm master is on the bridge
  - Confirm vessel is in hand steering

**RNA/PRECAUTIONARY REGULATIONS:**

1. Maximum speed 12 kts
2. Min ¼ NM CPA

**OUTBOUND OR GETTING UNDERWAY FROM ANCHORAGE:**

1. Call "San Pedro Traffic" 15 minutes prior to departing the breakwater or from any harbor/location within 25nm from PT FERMIN Light and provide the following information:
  - Vessel name/call sign.
  - Destination and direction of travel.
  - ETA to the pilot boarding area (if inbound).

**DEPARTING THE PRECAUTIONARY AREA:**

1. Report departing the Precautionary Area.

**CHECKING OUT OF THE SYSTEM:**

1. Report departure from the VTS at the 25nm limit or destination if within the 25nm limit.

**ADDITIONAL REQUIREMENTS:**

1. Vessels anchoring within the VTS shall maintain a listening watch on CH-14 VHF/FM and contact the VTS 15 minutes prior to beginning to navigate within the VTS area.

**VESSEL TRAFFIC MANAGEMENT SYSTEM:**

There is a Vessel Traffic Management System (VTMS) within the federal breakwater of Los Angeles and Long Beach Harbors. Vessels inside the federal breakwater within the boundaries of Los Angeles and Long Beach harbors will be provided with advisory information on other marine traffic and any additional information available to the VTC's that may affect vessel traffic safety. The Los Angeles Sector is operated by the Los Angeles Pilot Station. Call Sign: "LOS ANGELES PILOTS" on channel 73 VHF/FM. The Long Beach Sector is operated by the Jacobsen Pilot Service. Call Sign "LONG BEACH PILOTS" on channel 12 VHF/FM.

## VTS USER MANUAL:

VTS LA-LB User Manual (April 1, 2021) may be viewed or obtained by visiting our website at [www.mxsocal.org](http://www.mxsocal.org), or by contacting the VTS Los Angeles/Long Beach 24 hour number at (310) 832-6411. We encourage all interested parties to visit the Marine Exchange Vessel Traffic Center, the Los Angeles Pilot Station and Long Beach Pilot Station. We also encourage suggestions for improvements to the VTS USER MANUAL or to VTS procedures.

Phone: (310) 519-3134 (Administration Office)  
(310) 519-3128 (Accounting Manager)  
(310) 832-6411 (24-hour ops center)

Email: 24/hr. Watch traffic@mxsocal.org  
General info info@mxsocal.org

Website: [www.mxsocal.org](http://www.mxsocal.org)

Twitter: @mxsocal.org

Facebook: @mxsocal.org

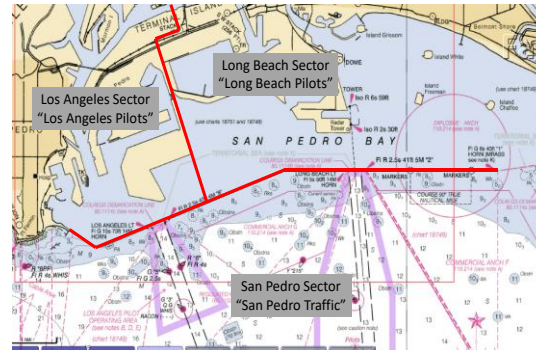
## VOLUNTARY WESTERN TRAFFIC LANES

To address the safety concerns created by increased traffic south of the Channel Islands, on October 6, 2009, the Los Angeles-Long Beach Harbor Safety Committee (LA-LB HSC) endorsed voluntary traffic lanes in the area south of the Channel Islands (referenced herein as “voluntary western traffic lanes”). The voluntary western traffic lanes are **not** an IMO approved traffic separation scheme, the International regulations for Avoiding Collisions at Sea (COLREGS) **Rule 10 does not apply**.

Description and further details may be found at our website at [www.mxsocal.org](http://www.mxsocal.org) or as listed in U.S.C.G. Local Notice to Mariners district: 11, Week 17/13, also in U.S.C.G. Sector Los Angeles – Long Beach Marine Safety Information bulletin 11-09.

## SANTA BARBARA CHANNEL TRAFFIC SEPARATION SCHEME AMENDMENT

The International Maritime Organization (IMO) amended the Traffic Separation Scheme (TSS) in the Santa Barbara Channel and the approach to the ports of Los Angeles/Long Beach, **effective June 1, 2013**. The TSS amendment reduced the width of the separation zone from 2 nautical miles (nm) to 1 nm by shifting the inbound lane shoreward and away from known whale concentrations. The outbound lane will remain unchanged in the current location. Narrowing the separation zone is expected to reduce co-occurrence of ships and whales while maintaining navigation safety. The IMO approved coordinates and graphic depicting the enclosed changes are provided in our User Manual located at our website.



## **VESSEL TRAFFIC SERVICE LOS ANGELES-LONG BEACH**

(Updated: April 1, 2021)

**SERVING THE SOUTHERN  
CALIFORNIA MARITIME INDUSTRY  
BY FACILITATING SAFE, EFFICIENT  
AND RELIABLE MARINE  
TRANSPORTATION.**

**VESSEL TRAFFIC SERVICE LOS ANGELES-  
LONG BEACH (VTS LA-LB)**

**CALL SIGN: "SAN PEDRO TRAFFIC"**

The Vessel Traffic Service Los Angeles - Long Beach provides seamless navigational information to improve vessel transit safety from 25 NM seaward of PT Fermin to berth or anchorage. The United States Coast Guard (USCG) / Marine Exchange, Los Angeles Pilots and Long Beach Pilots each specializing in their own area, have worked together to create a unique partnership. The purpose of the Vessel Traffic Service is to improve vessel transit safety by providing vessel operators with advance information of other reported marine traffic and any additional information, advice and recommendations which may affect vessel traffic safety within the VTS area.