

**A.5 Voluntary
Western
Traffic
Lanes****VOLUNTARY WESTERN TRAFFIC LANES**

To address the safety concerns created by increased traffic south of the Channel Islands, on October 6, 2009, the Los Angeles/Long Beach Harbor Safety Committee (LA/LB HSC) endorsed voluntary traffic lanes in the area south of the Channel Islands (referenced herein as “voluntary western traffic lanes”). The LA/LB HSC developed these lanes as a voluntary measure to promote vessel safety.

The voluntary western traffic lanes were not developed using processes established under U.S. federal law or by the IMO. As such, these lanes have not been reviewed nor approved by any U.S. federal authority, including the U.S. Coast Guard, or the IMO. The Coast Guard took separate action to study the increased traffic in this area, which included an opportunity for the public to comment.

Since the new voluntary western traffic lanes are **not** an IMO approved traffic separation scheme, the International regulations for Avoiding Collisions at Sea (COLREGS) **Rule 10 does not apply.**

Mariners should exercise due caution when choosing to operate south of the Channel Islands and within the voluntary western traffic lanes.

The following is a description of the Voluntary Western Traffic Lanes:

a. Voluntary Western Traffic Lanes:

(1) A precautionary area for the Voluntary Western Traffic Lanes is bounded by a line connecting the following geographical positions:

- (i) 33 35.50’N 118 20.81’W
- (ii) 33 35.50’N 118 36.35’W
- (iii) 33 42.90’N 118 36.35’W
- (iv) 33 35.50’N 118 20.81’W

(2) A separation area bounded by a line connecting the following geographical positions:

- (v) 33 36.50’N 118 36.35’W
- (vi) 33 38.60’N 119 05.50’W
- (vii) 33 40.60’N 119 05.50’W
- (viii) 33 38.50’N 118 36.35’W

VTS USER MANUAL

Marine Exchange of Southern California and Vessel Traffic Service (VTS) of Los Angeles and Long Beach:
VHF Channel 14 and 310-832-6411 (24 hours) Accounting Office: 310-519-3128 (business hours)

(3) Traffic westbound to transit between the separation area and a line connecting the following geographical positions:

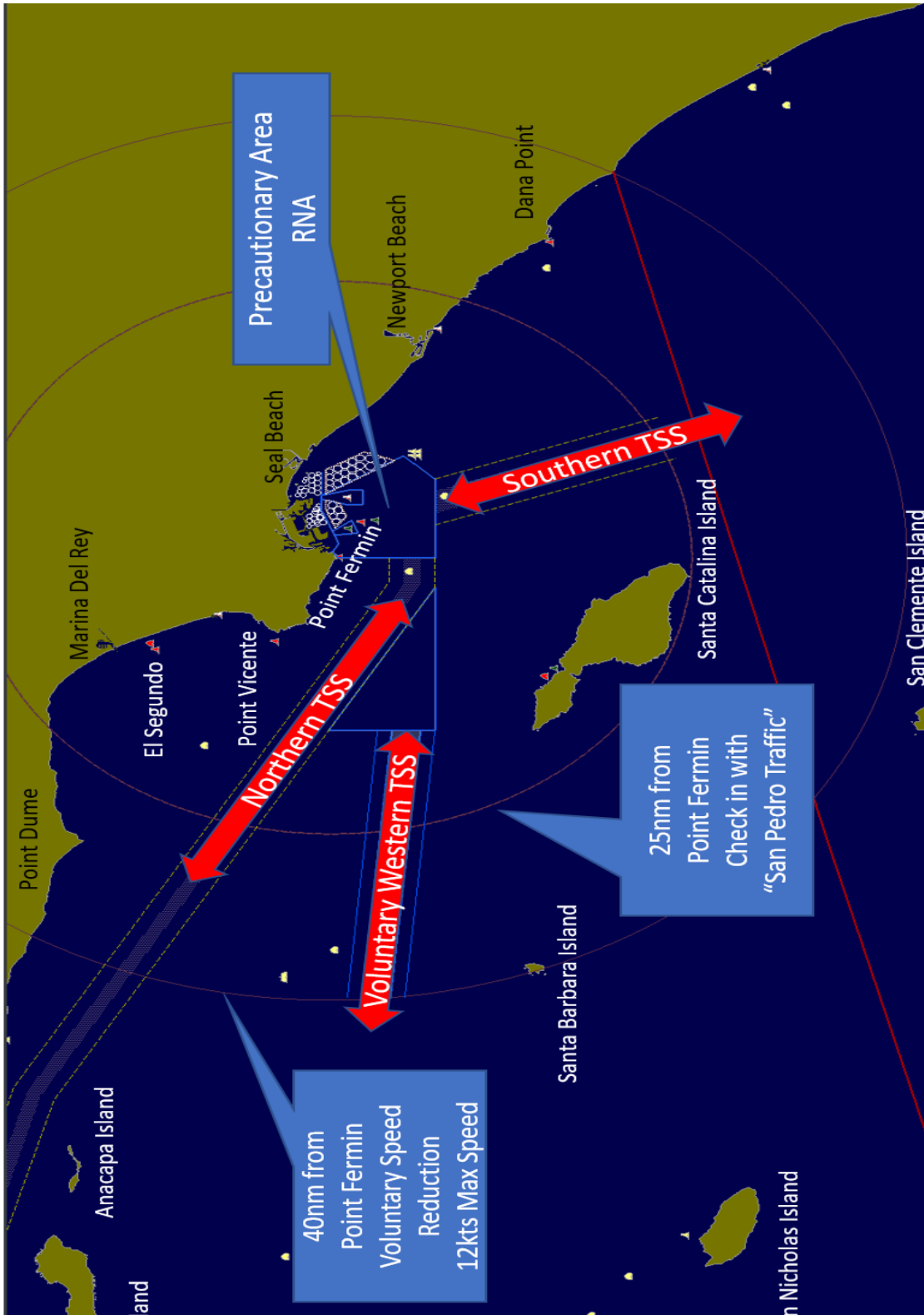
- (ix) 33 39.50'N 118 36.35'W
- (x) 33 41.60'N 119 05.50'W

(4) Traffic eastbound to transit between the separation area and a line connecting the following geographical positions:

- (xi) 33 35.50'N 118 36.35'W
- (xii) 33 37.60'N 119 05.50'W

VTS USER MANUAL

Marine Exchange of Southern California and Vessel Traffic Service (VTS) of Los Angeles and Long Beach:
VHF Channel 14 and 310-832-6411 (24 hours) Accounting Office: 310-519-3128 (business hours)



VTS USER MANUAL

Marine Exchange of Southern California and Vessel Traffic Service (VTS) of Los Angeles and Long Beach:
VHF Channel 14 and 310-832-6411 (24 hours) Accounting Office: 310-519-3128 (business hours)