



## Marine Safety Information Bulletin Sector Los Angeles – Long Beach

Commander  
U.S. Coast Guard Sector  
Los Angeles – Long Beach  
1001 S. Seaside Avenue Bldg. 20  
San Pedro, CA 90731-0208

MSIB Number: 01-22  
Date: Jan 12, 2022  
Staff Symbol: spv  
Phone: (310) 521-3770  
Email: seclalb@uscg.mil

### Pilot Boarding Platform Improper Installation and Failure

Coast Guard Sector Los Angeles - Long Beach issues this bulletin to ensure vessels take due care in installing pilot boarding platforms and accommodation ladders. Improper setup of pilot boarding platforms and accommodation ladders onboard cargo vessels caused significant hazards to personnel, the former of which caused a vessel pilot to fall into the water on December 26<sup>th</sup>, 2021.

The vessel's pilot boarding area housed a platform approximately two and a half feet tall for accessing the Jacob's ladder. A locking pin that would normally secure the platform to the deck was loose due to improper installation. When the pilot stepped over the side of the vessel to climb down the Jacob's ladder, the loose locking pin gave way and caused the platform and pilot to fall into the water.



Fig. 1: Pilot boarding platform

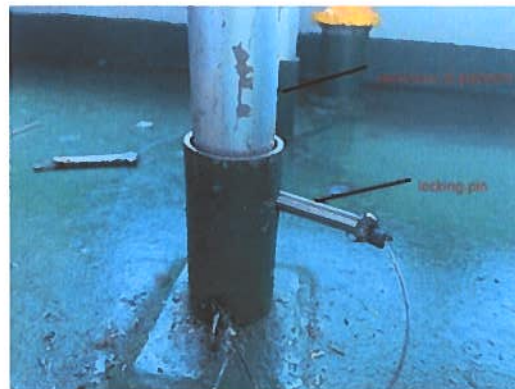


Fig. 2: Pilot boarding platform stanchion and locking pin.

In a separate incident that occurred on January 3<sup>rd</sup>, 2022 a vessel pilot attempted to board foreign flagged vessel via an accommodation ladder and noticed that the locking pins used to secure the railings to the ladder were not in place.



Fig. 3: Accommodation ladder with unsecured locking pins.

The Coast Guard strongly recommends that vessel owners and operators:

- Ensure all stanchion locking pins are fully inserted and secured with a cotter pin or safety swivel.
- Maintain accommodation ladders, Jacob's ladders, and vessel boarding platforms.
- Periodically inspect the condition of the vessel's boarding equipment replace it when necessary.
- Assign a crewmember to conduct a safety inspection of the pilot boarding ladder and related equipment after it has been set up and prior to use.

This Safety Alert is provided for informational purposes only and does not relieve vessels any domestic or international safety, operational, or material requirement. Developed by the Investigators of Sector Los Angeles-Long Beach. Questions may be sent [SECLALB@uscg.mil](mailto:SECLALB@uscg.mil).

ORE.REBEC Digitally signed by  
ORE.REBECCA.E.10  
CA.E.10147 14780404  
80404 Date: 2022.01.12  
15:18:16 -08'00'

R. E. Ore  
Captain, U.S. Coast Guard  
Captain of the Port, Los Angeles – Long Beach



# NOTICE TO ALL SHIPS

**\*\*PILOT LADDER FAILURES\*\***

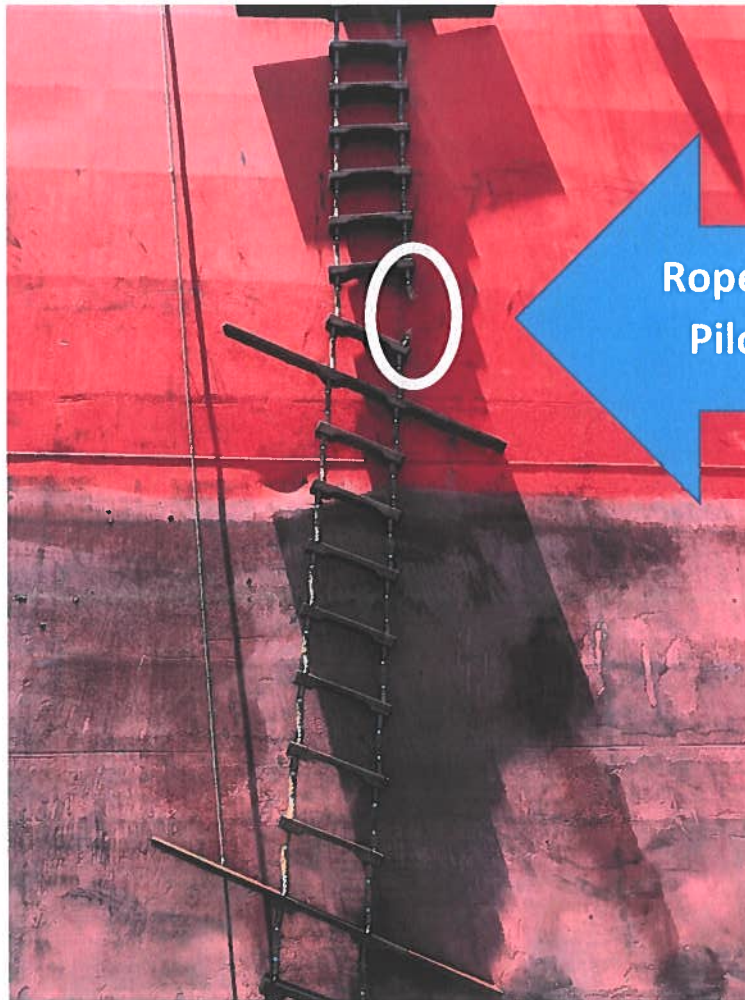
THE BELOW INCIDENT HAPPENED AT THE  
PORT OF LONG BEACH JULY 2020



## **Pilot Ladder Rope Broke while Pilot on Ladder**

Luckily, the pilot was able to hold on.

***ACTION: ALL SHIPS MUST INSPECT THEIR LADDERS EVERY TIME BEFORE THE PILOT BOARDS OR DISEMBARKS.***



**Rope Broke while  
Pilot on ladder**

**PLEASE HELP US PREVENT SERIOUS ACCIDENTS TO OUR PILOTS.**

**Thank you: Jacobsen Pilot Service, Inc. & Los Angeles Pilot Service**

12 August 2020